

# ABINGDON'S

# Albert WALK



A wheelchair  
 accessible route  
**30-45 mins**



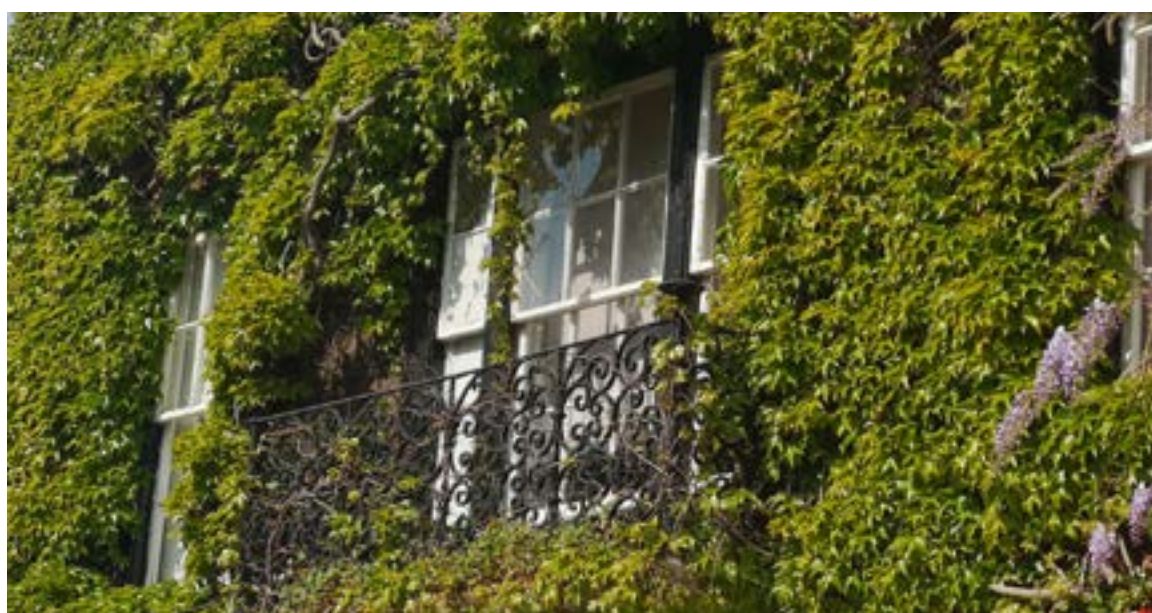
## 1: Market Square

Start in the Market Square. Turn right opposite Abingdon Museum and proceed down High Street.



## 2: War Memorial

At the War Memorial turn right and proceed up Bath Street. At the end of Bath Street pass the building with an ornate balcony on the right. Turn left and then cross Stratton Way at the pedestrian crossing.



## 3: Abingdon School

Take the footpath opposite the pedestrian crossing into Park Road. On the right is Abingdon School.



## 4: Albert Park

Continue along Park Road and cross Park Crescent. Immediately on the right at the corner is an entrance to Albert Park. If the railings at the entrance are too low continue along Park Road and there is a further entrance to the park on the right.



The land forming Albert Park has been owned by the Christ's Hospital charity since 1553. The park itself was designed by Mr Chapman in the 1850s. There is an information board about the park near location 4.

## 5: Conduit House

From the corner entrance can be seen a small hexagonal building called Conduit House, which operated as a water channel. After this bear left to proceed clockwise round the park.



## 6: Prince Albert's statue

There is a circular path around the park which leads to the statue of Prince Albert, the Consort of Queen Victoria. This monument is 48 feet or 14.6 metres high, and was designed by John Gibbs of Oxford.

## 7: Trinity Church

After arriving back at Conduit House, instead of turning left out of the park to go down Park Road, proceed down Conduit Road, passing Trinity Church. At the junction with Ock Street turn left in the direction of the town centre.

## 8: Brewery Tap

On the right is the Brewery Tap, one of Abingdon's oldest pubs. At the junction with Stratton Way cross via the pedestrian crossing back into the High Street.



*We hope you have enjoyed this walk. Return to the Market Square for some well-earned refreshment*